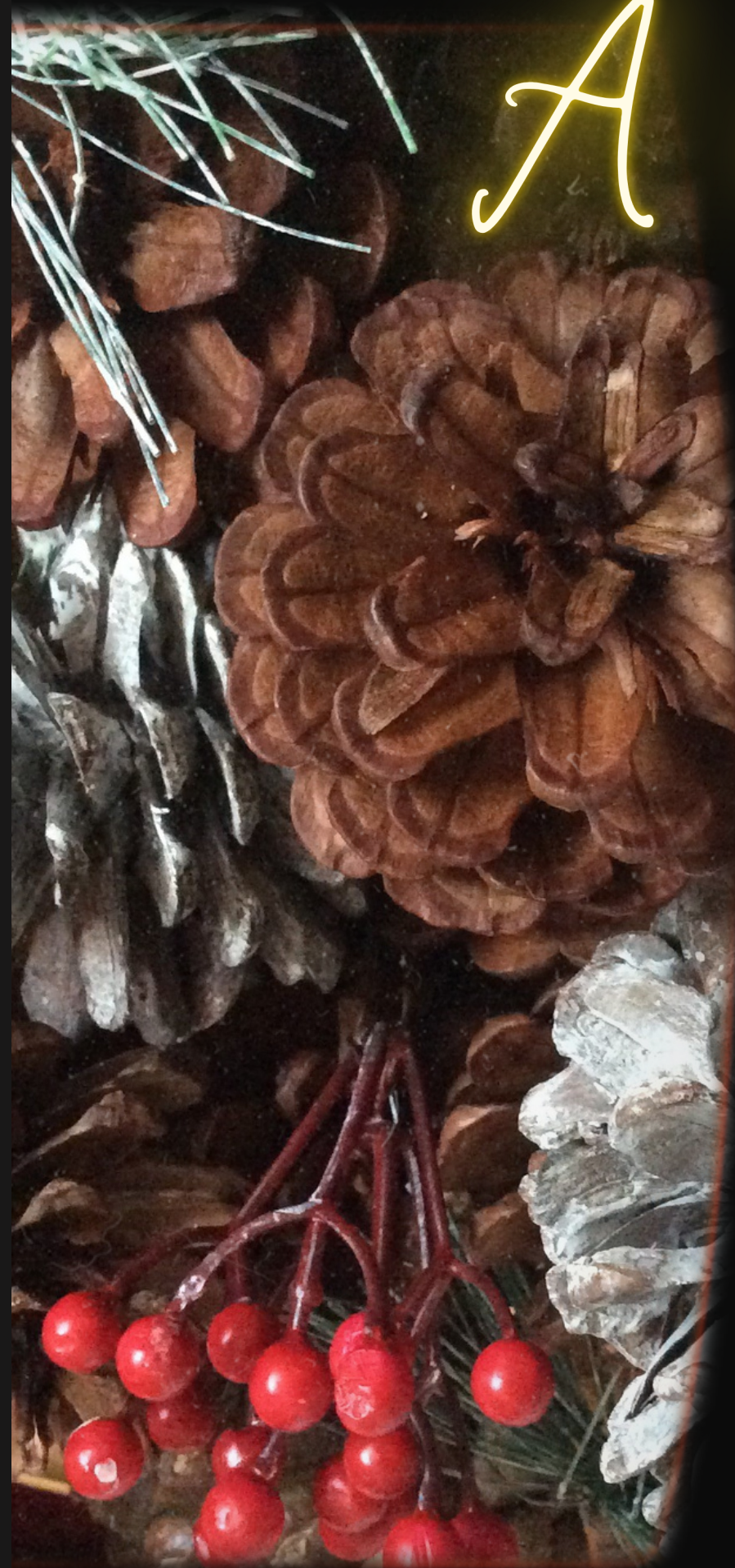


A child-led Christmas



Childhaven Nursery School

Christmas time....



A time for celebration....

A time to inspire our children and harness
all that excitement.

How do we do that without becoming a
production line of activities?

How do we keep the calm and purposeful
atmosphere?

At Childhaven we try to think about
preparing possibilities for learning. What
will encourage children to come over and
investigate? What are the options when
they get here?





We undress the tree each day so that children can experience decorating it.

It might not match and might look unloved but trust us, our tree is very loved indeed!



A few empty photo frames
prepares the way for
loose parts play. This
nearly always generates
some high quality
mathematical thinking.

A sprinkle of tinsel and
we have a magic tree to
climb in. Less is always
more.



A little
retreat...we
never know
each day
what it will
become....



We add a sprinkle of Christmas to existing areas – enough to entice children to come over, but not too much. We want children to make decisions and develop their own ideas. If we over-do the setting up we end up with lower levels of involvement.





We look at levels of challenge. We need to leave enough to think about.....enough to enable children to have a problem to solve....





Simple talking points....
make it easy for children
to see what is new. Less
is definitely more.

Child-led displays



Lots of photographs.....art work that is all different....backing created by children on a large scale

Thinking about practice

Does your environment take priority? Is time given to prepare it carefully each day?

Do you really need a production line of activities?

How often do you sit on the floor and look at the environment through the eyes of a child?

Can children decide when something starts and stops or do you have unnecessary rules?

If we want children to experience awe and wonder, we need to leave enough to the imagination. Look again at your provocations / set ups - do they say "come and explore"?

Is your room flooded with single-use resources that can only do one thing? Do children wander off quickly?

Actions and thoughts.....

ROUTINES

Ensure children have long periods of uninterrupted time to become deeply involved

Agree routines with all staff

ADULT DEPLOYMENT

Create consistency so that adults maintain provision day to day

Enable adults to make day to day decisions about provision

ADULT INTERACTION

Play....as if you are a child

Ask fewer questions

Think out loud

ENVIRONMENT

Provide a range of possibilities not activities

Ensure resources are open ended

Create space - less is more

Plan for children to move things